



**JUDGE BAKER
CHILDREN'S CENTER**

IMPROVING CARE. CHANGING LIVES.

**BIENNIAL REPORT
FY 2017-18**



BOARD OF TRUSTEES*

Richard P. Breed, III
Chair

John Serafini
First Vice-Chair

Michele Courton Brown
Second Vice-Chair

David J. Martens, CFA, CAIA
Treasurer

Deborah L. Anderson
Clerk

Laura K. Barooshian, CPA, MST, AEP, CAP
Thomas W. Bishop
Julie M.B. Bradley
Christopher D. Cabral, CFA
Christine Dunn
Thanda Fields Brassard
Primo A.J. Fontana
Robert P. Franks, Ph.D.
Andrew R. Knowland, Jr.
John R.A. Pears, RIBA
Mary H. Schmidt
David W. Walker, CFA, CMT
Jay L. Webber (Emeritus)
Dorothy A. Weber, Ed.D. (Emeritus)

LEADERSHIP TEAM*

Robert P. Franks, Ph.D.
President and Chief Executive Officer

Christopher Bellonci, M.D.
*Vice-President of Policy and Practice,
Chief Medical Officer*

Sarah Duggan, MSW
Vice-President of Advancement

Alan L. Kaye, CPA, MBA
Vice-President of Finance and Operations

Christina O'Keefe, MBA
Vice-President of Administration

PROGRAM & DEPARTMENT DIRECTORS*

William R. Beardslee, M.D.
Senior Research Advisor

Rhea Chase, Ph.D.
Director of Early Childhood Programs

Daniel M. Cheron, Ph.D., ABPP
*Director of Training; Assistant Director
of the Center for Effective Child Therapy;
Chief Psychologist*

Nancy K. Gajee, Ph.D.
Director of Outpatient Clinical Services

Mason G. Haber, Ph.D.
Director of Evaluation

Philip A. Myers
Manager, Information Technology

James F. Prince, LICSW
Director of the Manville School

Marcy Ravech, MSW
Director of the Quality Care Initiative

Nina Rodriguez
Director of Facilities

Julie S. Springwater, MSW
*Director of the New England Association of
Child Welfare Commissioners and Directors*

Rachel Sudikoff, SPHR, SHRM-SCP
Director of Human Resources

Claudio O. Toppelberg, M.D.
*Principal Investigator, Child Language &
Developmental Psychiatry*

Richard Young
Director of the Child-at-Risk Hotline

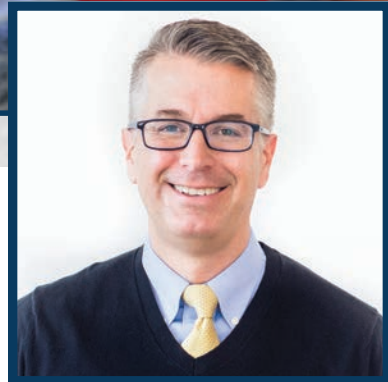
* listings as of March 2019



OUR MISSION

Judge Baker Children's Center promotes the best possible mental health of children and families through the integration of research, intervention, training and advocacy.

- Through research we identify best practices.
- Through intervention we bring those practices to children and families of diverse communities.
- Through training we disseminate skills in research and quality care.
- Through advocacy we use scientific knowledge to expand public awareness and inform public policy.



Our ongoing mission is to bridge the gap between knowledge of what works and practice in the field to provide every child and family with the quality of care that they need and deserve. Through our current activities and initiatives, we believe the future is bright, and we are on the cusp of a new era for children's behavioral health.

Today our committed staff serves children through multiple programs and services designed with the best available knowledge to ensure the greatest possible outcomes. Through services such as our Center for Effective Child Therapy (CECT), our NEXT STEP: College Success and Independent Living and our newest program, Camp Baker, a summer camp for children with ADHD, we provide a range of evidence-based direct services that help families get back on track. Our Manville School has been a leader for decades in providing the

highest quality special education services to children with complex behavioral health needs in a therapeutic setting. We also train other professionals across the nation in our best practice models of care through our Quality Care Initiative, ensuring that children and families have access to the highest quality care.

Other key programs include the after-hours Child at Risk Hotline that we host for the Massachusetts Department of Children and Families, ensuring that vulnerable children receive the protection and support they need, and the New England Association of Child Welfare Commissioners and Directors (NEACWCD) which provides opportunities for networking, training, and technical assistance to child welfare agencies across New England.

Over the past 100 years, we have continued to grow and adapt with the changing times. We have learned so much in the past century and are committed to being a learning organization that evolves to meet the needs of our community and society. Our focus on providing the highest quality care for children has never wavered.

We look forward to the next century of supporting future generations of children and families.

Judge Baker Children's Center
Improving care. Changing lives.

Robert P. Franks, Ph.D.
President and CEO

LETTER FROM OUR BOARD CHAIR



Dear Friends,

In November 2017, we celebrated Judge Baker Children's Center's centennial year with the Hopes & Dreams Gala at Symphony Hall in Boston, marking a century of proven leadership in children's mental health. Over the last hundred years, Judge Baker Children's Center has helped countless children and families chart their own best course for developmental, emotional, and intellectual well-being. This biennial report for fiscal years 2017 and 2018 is meant to share our pride and celebration with you, while we also look ahead with renewed energy and dedication to improving the quality of care for our youth and their families for the next hundred years.

Over my tenure on the Board, I have seen the excellent services, proven outcomes, and outstanding training and research that are synonymous with Judge Baker. The remarkable staff provides quality services that have measurable impact on families across diverse communities in Massachusetts and beyond. The evidence-based practices and strategies established and advanced by our professionals have given children and families new opportunities to grow and thrive. One example of our high quality, evidence-based programs is Camp Baker, a six-week summer camp that teaches children ages 6-12 effective ways to manage ADHD and other behavior issues. In the summer of 2019, we are thrilled to partner with Hale Reservation in Westwood, MA, allowing us to offer this innovative, therapeutic camp in a quintessential outdoor camp setting.

Judge Baker Children's Center is also a strong voice in mental health policy, hosting forums and leading conversations on ways we can improve the lives of all children. We held our inaugural early childhood policy forum in March 2017, convening experts in the fields of child development, mental health, and public policy to discuss the importance of supporting healthy development from birth to age 5. More recently, in February 2019, we hosted a juvenile justice policy forum in partnership with members of the Massachusetts state government about the importance of understanding and addressing the behavioral, emotional and developmental needs of justice-involved youth. Moving forward, Judge Baker will continue to be a voice of advocacy and policy advances to promote evidence-informed children's mental health care and special education.

As we start our second hundred years, we pause to honor you and all our loyal supporters who help us to achieve our goals and reach for new ones. Please join me in both celebrating our accomplishments, as well as looking ahead to what we can accomplish next in our efforts to support the hopes and dreams of all children and families.

On behalf of the Board of Trustees, thank you for your support.

Sincerely,

A handwritten signature in black ink that reads "Richard P. Breed, III". The signature is written in a cursive style with a small flourish at the end.

Richard P. Breed, III
Chair of the Board of Trustees

PROGRAM INFORMATION

We provide a range of comprehensive services and supports to children, families, and providers in order to improve and sustain the quality of mental health care. Our programs help support a continuum of care that works at the policy, systems, and practice levels to promote healthy development in children. Our key programs are briefly described below. To learn more, please visit jbcc.harvard.edu.

Center for Effective Child Therapy

An outpatient clinic that provides evidence-based mental health treatments for children ages 2-19, and their families, who are dealing with common problems related to anxiety, depression, trauma, disruptive behavior, and parenting issues.

Quality Care Initiative

We utilize a range of strategies aimed at bridging the gap between science and practice in children's behavioral health. The strategies are collaborative, evidence informed, and targeted to improve the quality of care.

Child-at-Risk Hotline

An after-hours emergency response system for the Massachusetts Department of Children and Families (DCF), fielding over 175,000 calls each year.

Manville School

A therapeutic day school for children ages 5-16 with emotional, behavioral and learning disorders. Manville uses cutting-edge curriculum, instructional and clinical practices to achieve exceptional educational outcomes. Youth come from approximately forty cities and towns from across Massachusetts.

New England Association of Child Welfare Commissioners and Directors

A consortium of child welfare agency leaders and staff from the six New England states working together to develop and implement policies that promote competent child welfare practices.

Next Step:

College Success and Independent Living

A program focused on fostering skills of independent living in a college environment for students with social communication deficits. Designed for students, grades 9-12, with Asperger's Syndrome, Autism Spectrum Disorders, non-verbal learning disabilities, or related learning differences, who are serious about attending college after high school.

Camp Baker

(formerly the Summer Enrichment Institute)

A therapeutic summer camp for children, ages 6-12, with mild to moderate symptoms of ADHD serving families in the greater Boston area and beyond.

Research

A cutting-edge research portfolio, funded by federal and state agencies and private foundations, focused on child mental health treatment and prevention strategies.

Professional Training

We are a nationally-recognized institution providing professional training that has developed leaders in the field of mental health and special education for over 100 years. We work with both students and established professionals in the fields of psychology, social work, early childhood, special education, psychiatry, nursing, and mental health counseling to learn and apply the principles of evidence-based practice.





SUCCESS STORY

“ We went through the Center for Effective Child Therapy’s (CECT) **Parent Child Interaction Therapy (PCIT)** program a few years ago when our son was 5. We had a formal behavioral assessment done and he was diagnosed with ADHD and depression. We felt overwhelmed and were looking for a first step that was defined and actionable, which is what we found when we called the CECT. We needed help but also just wanted our son to be able to play and be a little kid.

The program was hard work and the results weren’t instant, but the changes we and others saw in our son by the time we completed PCIT were remarkable. For the first time we felt like we were helping our child. He was less disruptive and just happier overall. Life hasn’t been perfect since completing PCIT, however seeing the difference the right evidence-based therapeutic approach can make makes the future feel less overwhelming. Our son is doing very well now. We hope this positive trend continues but know that if not, Judge Baker Children’s Center is here to help us get the support we need. ”

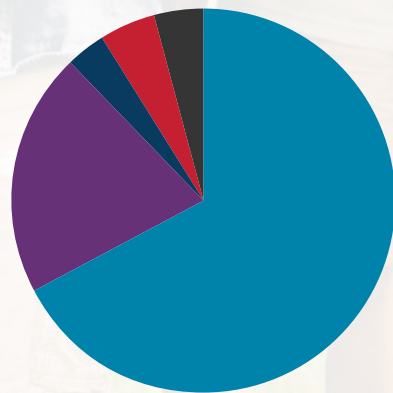
FINANCIALS

We continue to invest in the future of Judge Baker Children’s Center, building the capacity to support ongoing growth and new areas of work.

	Fiscal Year 2017	Fiscal Year 2018
INCOME		
Tuition	\$9,378,742	\$10,886,021
Contract Income	2,775,284	3,295,273
Federal Research & Foundation Grants	551,810	556,360
Contributions, Trusts, Bequests & Special Events	324,419	759,964
Other	677,303	644,173
Total Income	\$13,707,558	\$16,141,791
EXPENSES		
PROGRAM SERVICES		
School Based Programs	\$8,351,458	\$9,609,144
Research & Training Programs	1,523,531	1,889,217
Community Based Programs	1,845,131	2,042,975
Commissioner’s Association	288,486	305,250
Total Program Services	\$12,008,606	\$13,846,586
SUPPORTING SERVICES		
Administrative & General	\$1,879,162	\$2,344,483
Fundraising	320,653	560,570
Total Supporting Services	\$2,199,815	\$2,905,053
TOTAL EXPENSES	\$14,208,421	\$16,751,639
Change in Net Assets from Operations before Spending Rule	\$(500,863)	\$(609,848)
Board Approved Spending Rule	562,390	497,872
Change in Net Assets from Operations after Spending Rule	\$61,527	\$(111,976)
NON-OPERATING INCOME (EXPENSE)		
Utilization of Board Approved Spending Rule	\$(562,390)	\$(497,872)
Investment & Interest Income	179,425	167,280
Investment Expenses	(42,337)	(41,790)
Net Unrealized Gains/(Losses) on Investments	733,529	384,348
Net Realized Gains/(Losses) on Investments	27,908	(43,450)
Bad Debt Expense	(17,500)	-
Total Non-Operating Income (Expense)	318,635	(31,484)
Change in Net Assets	\$380,162	\$(143,460)
Net Assets at Beginning of Year	\$27,882,454	\$28,262,616
Net Assets at End of Year	\$28,262,616	\$28,119,156

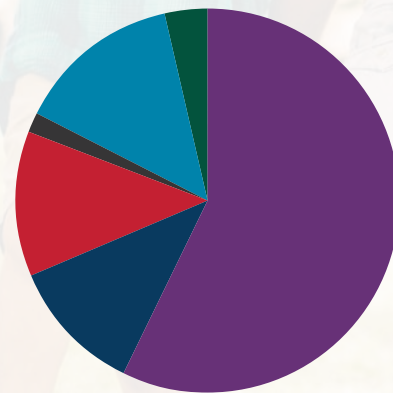
2018 FINANCIALS AT-A-GLANCE

INCOME



- 67% **TUITION**
- 20% **CONTRACT INCOME**
- 3% **FEDERAL RESEARCH & FOUNDATION GRANTS**
- 5% **CONTRIBUTIONS, TRUSTS, BEQUESTS & SPECIAL EVENTS**
- 4% **OTHER**

EXPENSES



- 57% **SCHOOL BASED PROGRAMS**
 - 11% **RESEARCH & TRAINING PROGRAMS**
 - 12% **COMMUNITY BASED PROGRAMS**
 - 2% **COMMISSIONER’S ASSOCIATION**
-
- 14% **ADMINISTRATIVE & GENERAL**
 - 3% **FUNDRAISING**

JUDGE BAKER CHILDREN'S CENTER DONORS

Fiscal Years 2017 and 2018
July 1, 2016 – June 30, 2018

The following is a listing of all donors who made a gift to Judge Baker Children's Center between the dates of July 1, 2016 and June 30, 2018. This compilation reflects the names of all those who supported the Annual Fund, the Golf Tournament, the Rodman Ride for Kids, and the Centennial Hopes and Dreams Gala. It also includes foundation and individual support for our programs. Judge Baker Children's Center wishes to thank all our donors for their very generous support.

INDIVIDUAL DONORS

Chris Abbott, FY'17
 Walter Abbott, FY'17
 Ronnie Abboud, FY'18
 Joel and Mary Abramson, FY'18
 Peter Abuisi, FY'17, FY'18
 Jon and Terry Adams, FY'17
 Kara Adams, FY'18
 Eric Adelman, FY'18
 Audrey Ades, FY'17
 Robert and Marilyn Adler, FY'18
 Seth and Laurie Adler, FY'18
 Jyoti Aggarwal, FY'17
 Marianne Ajemian, FY'17
 Stephen A. Alagero, FY'18
 Robert and Sandra Alevizos, FY'17
 Michael Algas, FY'18
 Myrna Algas, FY'18
 Ann Marie Allara, FY'17, FY'18
 Dr. Mark E. Allara, FY'18
 Pamela E. Allara, FY'17, FY'18
 Kate Allen, FY'18
 Sunny Allen and Chris Jones, FY'18

Lawrence K. Altman, M.D., FY'18
 David Altschuler, FY'18
 Louisa and Nicholas Anastasopoulos, FY'18
 Charles Anderson, FY'17
 Deborah and Donald Anderson, FY'17, FY'18
 Arthur Andon, FY'17
 Bill Andrews, FY'18
 Edwin and Marilyn Andrews, FY'17, FY'18
 Walter and Eleanor Angoff, FY'17, FY'18
 Anonymous, FY'17, FY'18
 Robert and Nancy Anthony, FY'18
 John Antonelli, FY'18
 Selena R. Antonello, FY'17, FY'18
 Mark Antoniewicz, FY'18
 Joseph and Kathy Arabia, FY'18
 Nicole Argyriadis, FY'17
 Neil Arkuss, FY'18
 Rick Armand, FY'17
 Marjorie Arons-Barron and James H. Barron, FY'17, FY'18
 James Ash, FY'18
 Barbara and Richard Atlas, FY'18
 Bruce Auerbach, M.D. and Robin Richman, M.D., FY'18

Carl and Andrea Axelrod, FY'17, FY'18
 Cathy Bacani, FY'17
 Liliana and Hillel Bachrach, FY'17
 William Baker, FY'17
 William Baldwin/Argent Wealth Management, FY'18
 Peter and Barbara Ball, FY'17
 Jonathan Bass, FY'18
 Lucille Batal, FY'17
 Andrew Bayliss, FY'18
 Bill and Barbara Beardslee, FY'18
 Theresa and Gregory Becker, FY'17
 Mandy Beebe, FY'17
 Christopher Bellonci and Edouard T. Fontenot, FY'18
 Emna Ben Salem, FY'18
 Laurie A. Bencal, FY'18
 William A. Bennett, FY'18
 Nancy and Bob Bent, FY'18
 Glenn and Loraine Berger, FY'18
 Deborah Davis Berman, FY'17, FY'18
 George A. Berman, II and Regina E. Roman, FY'17
 Joseph Berman, FY'18
 Roz and Wally Bernheimer, FY'18

Tanya J. Beroukhim, FY'18
 Jennifer A. Bingham, FY'18
 Walter and Grace Bird, FY'18
 Kirstin Birtwell, FY'18
 Sara Bisbicos, FY'18
 Elizabeth S. Bishop, Ph.D., FY'17, FY'18
 Tom and Joan Bishop, FY'17, FY'18
 K & J Blaney, FY'17
 Elizabeth and Richard Blankstein, FY'17, FY'18
 Hughie Bligh, FY'17
 Sharon Blumenthal, FY'18
 Jodi Blute, FY'18
 Stephen Bohn, FY'17, FY'18
 Ryan and Tracy Boland, FY'17, FY'18
 Grace Bradley, FY'18
 Julie and Joseph Bradley, FY'18
 Thanda Brassard and Terry McMahon, FY'17, FY'18
 Donnie Braunstein, FY'17, FY'18
 Dorothy S. Breed, FY'17
 Edward M. Breed, FY'17
 Rick and Lynne Breed, FY'17, FY'18
 John Brelus, FY'18
 Susan Brelus, FY'18
 Timothy B. Brenton, FY'18
 Lorraine Bressler, FY'17, FY'18
 Karen Bressler and Scott Epstein, FY'18
 James and Tracy Brown, FY'17, FY'18
 M. Phoebe Brown, FY'17, FY'18
 Michele Courton Brown, FY'18
 Richard and Laurie Brownstein, FY'18
 Ralph and Elizabeth Bryant, FY'17, FY'18
 Heidi Wattendorf Buckley, FY'17, FY'18
 Robert C. Buffum, FY'18
 Robert C. Buffum, Jr., FY'17
 Kirsten Burbo, FY'17
 John Burns, FY'17
 David Bussius, FY'17
 Susan and Paul Buta, FY'17, FY'18
 Katie and Paul Bутtenwieser, FY'17, FY'18
 William Byrne, FY'17
 Christopher Cabral, FY'18
 Kathy Cade and Fred Miller, FY'17, FY'18
 Ellen Cain, FY'17
 Jennifer and Jim Calhoun, FY'18
 David Camacho, FY'17
 Patrick and Sarah Cammarata, FY'17, FY'18
 Brett Campbell, FY'18
 David Campbell, FY'17, FY'18
 Paul Campbell, FY'17
 Leonard and Nancy Carapezza, FY'18
 Louis Carbonaro, FY'17
 Alicia Caritano, FY'17
 David and Linda Carney, FY'18
 Andrea G. Case, FY'17
 Martin Casella, FY'18

Maria Cataldo-Cunniff, FY'18
 Daniel Chin, FY'17
 Genoveffa F. Chin, FY'17
 Howard K. Chin, FY'17
 Michael and Wendy Chin, FY'18
 Paul Chisholm, FY'17, FY'18
 Lindsay and Alex Chryssis, FY'18
 Mark S. Ciommo, FY'17
 Dr. Jonathan J. Clark, FY'18
 Oliver Clark, FY'17
 Ellen R. Cohen, FY'18
 Joseph M. Cohen, FY'18
 John Coen, FY'18
 Jonathan Cohen, FY'18
 Susan and Gerald Cohen, FY'18
 Dr. Joan K. Cohn, FY'18
 Roberta L. Cohn, FY'17
 Kim Collier, FY'18
 Jeffrey J. Colucci, FY'18
 Kevin Comer, FY'17, FY'18
 Pat Comer, FY'18
 Alison Conant, FY'18
 Barbara and James Condon, FY'17, FY'18
 Steven Conine, FY'18
 Brian Connor, FY'17
 Bill Connors, FY'18
 Erin Connors, FY'18
 Frank Conway, FY'18
 Linda G. Conway, FY'18
 Charles Cooney and Peggy Reiser, FY'18
 Ranny Cooper and David Smith, FY'18
 Charles Cope, FY'18
 Adam Corbin, FY'18
 Cary J. Corkin, FY'18
 Michael and Barbara Jean Corrente, FY'17
 Dan and Mary Costa, FY'17, FY'18
 Michael Costa, FY'17
 David Coughlin, FY'18
 Michelle C. Covell, FY'18
 Sally Cox-Johnston, FY'18
 Matthew and Janice Coyle, FY'18
 Bryan and Susanne Coyne, FY'17
 Kathy Cramer, FY'18
 Roy and Mary Creedon, FY'17
 Cynthia and Harvey Creem, FY'17, FY'18

Harvey and Tina Crosby, FY'17, FY'18
 Sandra and David Cross, FY'17
 John Crowder and Janice Lane, FY'17
 Christine Crowley, FY'17, FY'18
 Balamurugan Cumaresan and Vaithehi Muttulinga, FY'18
 Cynthia & Oliver Curme/The Lost & Foundation, Inc., FY'18
 Marla Glanzer Curtis and Lawrence H. Glanzer Curtis, FY'18
 Paul G. Curtis, FY'17, FY'18
 William E. and Denise M. Daisy, FY'17, FY'18
 Maureen A. Daley, FY'18
 Kevin Daly, FY'17
 Bruce Daniels, FY'18
 Carol and Richard Daynard, FY'18
 Suzanne Deck, FY'17, FY'18
 Ginger and Donovan Delano, FY'17
 Christiane Delessert, FY'18
 Christopher Delorey, FY'17
 Thomas DeMarco, FY'17, FY'18
 John and Gina Deneen, FY'18
 David Depew, FY'17
 Deidre DeRosa, FY'17
 Robin M. Deutsch, Ph.D., FY'17
 Christopher and Sarah Dewart, FY'18
 James Dias, FY'17, FY'18
 Wes Dickerson, FY'18
 Jeff Dickinson, FY'18
 James DiGregorio, FY'17
 Douglas Doben, FY'17
 Phyllis Dohanian, FY'18
 Alicia Doherty, FY'17
 Russ and Deb Doherty, FY'18
 Edward and Maria Dolan, FY'17
 David J. Donahue, FY'18
 John Dondero, FY'17, FY'18
 Allyson and Patrick Donnelly, FY'18
 James Donnelly, FY'18
 Timothy Donovan, FY'17
 Maryellen Dooley, FY'18
 Sarah Doran, FY'17
 Mark Dorin, FY'17
 M. Eileen Dougherty, FY'17

Center for Effective Child Therapy



Using MATCH (our evidence-based mental health treatment) children saw 37% shorter treatment time for anxiety, depression, trauma and conduct problems.

Martin J. Drell, M.D., FY'17, FY'18
 Ken and Hazel Dreyer, FY'18
 John S. Driscoll*, FY'17, FY'18
 Mary Duane, FY'18
 Edward A. Dubilo and Grace
 Zimmerman, FY'17, FY'18
 Barbara Duffy, FY'17
 Matthew Duggan, FY'17
 Sarah Duggan and Rich Thomas,
 FY'17, FY'18
 Stephen and Elena Duggan, FY'17, FY'18
 Brian E. Dunn, FY'18
 Christine O. Dunn, FY'18
 Gary and Anne Dunning, FY'17
 Margaret Eagle, FY'18
 Beth Edson, FY'18
 Brina E. Einstein, FY'18
 Todd and Amy Eisenberg, FY'17, FY'18
 Thomas I. Elkind, FY'18
 Harvey and Linda Elman, FY'17
 Jeremy and Jill Elman, FY'17
 Kristen and David Elmer, FY'17, FY'18
 Pamela Ely, FY'17
 David and Christina Endicott, FY'18
 Judith Epstein, FY'18
 Marcia Epstein, FY'18
 Michael and Susan Epstein, FY'18
 Alan Faccio, FY'17
 Sara Fay, FY'17
 Brendan and Ann Feeney, FY'17, FY'18
 Catherine Feeney, FY'17
 Liam Feeney, FY'18
 Joy Feldman, FY'18
 Kenneth Feldstein, FY'18
 Liam Feldstein, FY'18
 Andrew Ferrara, FY'18
 Joseph V. Ferrara, FY'17, FY'18
 Julia Ferrara, FY'17, FY'18
 Maureen Ferreira, FY'18
 Atty. Mary Ferriter, FY'18
 Caryn Finard, FY'18
 Denise and William Finard, FY'17, FY'18
 Harrison and Ruth Ellen Fitch, FY'17
 David Fixler, FY'18
 Peterson and Judy Fong, FY'18
 Primo and Erin Fontana, FY'18
 Todd Foreman, FY'17
 Louis and Dorothy Fossa, FY'17
 Reg and Barbie Foster, FY'17, FY'18
 Kerim Fouli, FY'18
 Alexander Francesconi, FY'18
 D. Grant and Beth Freeland, FY'18
 E. Alan Freeman, FY'17
 Joseph and Cynthia Freeman, FY'17
 Timothy Frey, FY'17, FY'18
 David Frost, FY'18
 James Frost, FY'17

Gideon Argov and Alexandra Fuchs, FY'18
 Mark I. Furman, M.D., FY'17, FY'18
 Mark S. Furman, FY'18
 Christy Gable, FY'17
 John T. Gaffney, FY'17, FY'18
 Eugene and Chloe Gallagher, FY'17, FY'18
 Mary Gallagher, FY'18
 Tracy Gallagher, FY'17, FY'18
 Timmy Garde, FY'17, FY'18
 Marion Gardner-Saxe and
 Leonard Saxe, Ph.D., FY'17
 John Gavin, FY'18
 Virginia Gavras, D.D.S., FY'18
 Sally and Alan Gayer, FY'18
 Aida and Thomas Gennis, FY'18
 Mark J. Gentile, FY'17
 Mr. and Mrs. John Gerngross, FY'18
 Susan Gerngross, FY'17
 Charles and Felicia Gervais, FY'18
 Michael J. Gilarde, FY'17
 Laurie Gillis, FY'18
 Gerry and Frances Ginsburg, FY'17
 Suzanne Giordano, FY'17, FY'18
 Charlotte Giovannella, FY'18
 Ellen and Gary Gittelsohn, FY'18
 Robert and Donna Gittens, FY'18
 Cathy Gleason, FY'17
 Andrew and Marjorie Glincher, FY'18
 Abigail Glovsky, FY'18
 Charles and Eileen Glovsky, FY'18
 Richard D. Glovsky and Hilary
 Glovsky, FY'17, FY'18
 Robert and Susan Glovsky, FY'18
 Sarah Glovsky and Harvey A. Fodor, FY'18
 Michael and Fukimo Gold, FY'18
 Peter Gold, FY'17, FY'18
 Zachary Goldberg, FY'18
 Elizabeth Goldberger, FY'18
 Dr. Stephen Goldfinger, FY'18
 Reeve and Sam Goldhaber, FY'18
 Neal Goldman, FY'18
 Wendy Gomez, FY'17
 Mark and Cheryl Goodman-Morris, FY'18
 Thomas Goodwin, FY'18
 Sharon Gorajec, FY'18
 Joseph and Molly Goss, FY'17, FY'18
 Kevin Goss, FY'17
 Robert Goss, FY'17, FY'18
 Stephen and Robin Goss, FY'17, FY'18
 Tracy and Thomas Goss, FY'17
 Thomas and Laurie Graham, FY'17
 Richard Granara, FY'17
 Leslie Grant, FY'17
 Susan and Julien Grant, FY'18
 Thomas Grape, FY'17
 Dean Graves, FY'17
 Amy Gray-Wilson and Alfred Wilson, FY'18

Joe Green, FY'17
 Chip Greene, FY'18
 Joseph G. Greenough, FY'17
 Richard Greenspan, FY'17
 Olivia Gregory, FY'18
 Shore Gregory and Celina Munoz, FY'18
 Dianne and Mike Grenier, FY'18
 Mary Grenier, FY'18
 Steven Grindle, FY'18
 Jennifer Grinnell, FY'18
 Howard and Joan Gross, FY'17, FY'18
 Luis Gutierrez, FY'17, FY'18
 Sarah Hancock, FY'17, FY'18
 Heidi Hanson, FY'18
 Garrett Harker, FY'18
 Glenn and Joyce Harkness, FY'18
 Gail Harris, FY'18
 Karen Harvey, FY'17
 Bruce Haskin, FY'18
 Randolph G. Hawthorne and
 Carliss Y. Bald, FY'17, FY'18
 James and Lisa Hayes, FY'18
 Denis Healy, FY'18
 Seamus Healy, FY'17, FY'18
 Robyn Heisey, FY'17, FY'18
 Richard Henry, FY'17
 Elliot Herman, FY'18
 Drs. Jim and Leni Herzog, FY'18
 Bill and Leila Hewitt, FY'18
 Lisa Heyl, FY'17
 Susanna High, FY'18
 Frank Hill and Jodi Wilinsky Hill, FY'18
 Stuart and Susanne Hirshfield, FY'18
 Binh Ho, FY'18
 Richard Hoffstein, FY'18
 David Holdway, FY'17
 Kenneth Holdway, FY'17
 Richard Holdway, FY'17, FY'18
 Robert G. Holdway and Elin H.
 Graydon, FY'17, FY'18
 Mr. and Mrs. Jeffrey Holland, FY'18
 Margaret Holland, FY'17, FY'18
 Steve and Lucy Hollingsworth, FY'18
 Kelly Hollister, FY'17
 Kevin G. Honan, FY'17, FY'18
 Thomas Honan, FY'17
 Ms. Jeanne M. Hopkins, FY'17
 Lawrence and Jacelaine Horn, FY'18
 Kimberley Hornung, FY'17, FY'18
 Donna Gaudet Hosmer and
 Andrew J. Hosmer, FY'18
 Barbara and Amos Hostetter, FY'17, FY'18
 Mariel Keane Hough, FY'18
 Michael P. Hourigan, FY'17, FY'18
 Mary T. Howard, FY'17, FY'18
 Peter Howe, FY'17
 Dick and Sandy Hoyt, FY'18



CORPORATE DONORS

All Brand New England, FY'18
 ArcPoint Strategy, FY'18
 Beacon Equity Partners, FY'18
 Berkshire Children and Families, FY'18
 Blue Cross Blue Shield of Massachusetts, FY'18
 BNY Mellon, FY'17
 Boston Private, FY'17, FY'18
 Boston University School of Social Work, FY'17
 CBIZ & MHM, FY'17, FY'18
 Creative Office Pavilion, FY'17
 Fiduciary Trust Company, FY'17, FY'18
 Cronan Leahy Masonry, FY'18
 G.V.W., Incorporated, FY'17, FY'18
 Grindle Robinson LLP, FY'18
 Harvard Medical School, FY'18
 Donald T. Hayes Co., Inc., FY'17
 Janitronics, FY'17
 Legal Sea Foods, FY'18
 LMA Services Company LLC -
 A TGO Company, FY'17, FY'18
 Locke Lord LLP, FY'17, FY'18
 Marsh & McLennan Agency, FY'17, FY'18

Matson Driscoll & Damico LLP, FY'18
 McLane Middleton, FY'18
 Morgan Stanley, FY'17, FY'18
 Nardella & Taylor, LLP, FY'18
 Nixon Peabody LLP, FY'17, FY'18
 T.G. O'Connor Contracting Corp., FY'17, FY'18
 Pathstone Federal Street, FY'17, FY'18
 Peddock Capital Advisors LLC, FY'17
 Prime Buchholz, FY'17, FY'18
 PRW Wealth Management LLC, FY'17, FY'18
 Ranfac Corp., FY'17, FY'18
 RSM US LLP, FY'17, FY'18
 Rosev Dairy Foods, Inc., FY'17, FY'18
 Ruberto, Israel & Weiner, PC, FY'17, FY'18
 S & F Construction, Inc., FY'17, FY'18
 Tarlow, Breed, Hart & Rodgers, PC, FY'17, FY'18
 TD Private Client Group, FY'18
 The Bishop Company, LLC, FY'17, FY'18
 The Dubilo Hill Group at Graystone Consulting, FY'18
 Tufts Medical Center, FY'18
 Wayfair, FY'18
 WilmerHale, FY'18

Kathleen Hughes, FY'17, FY'18
 Mr. and Mrs. Jon Hulak, FY'18
 Stephen Iannetti, FY'17
 Anne Innis, FY'17
 Robert Irwin, FY'17
 Jenna Israni, FY'17
 Mary-Stuart Jacobstein, FY'18
 Ralph and Janice James, FY'17
 Anita Jamieson, FY'17
 Margie and Everett Jassy, FY'18
 Charles Jellison, FY'17
 Scott Jenkins, FY'18
 Andrew Johnson, FY'17
 Tom Johnson, FY'17
 Kevin Johnston, FY'18
 Sarah "Sally" Johnston, FY'18

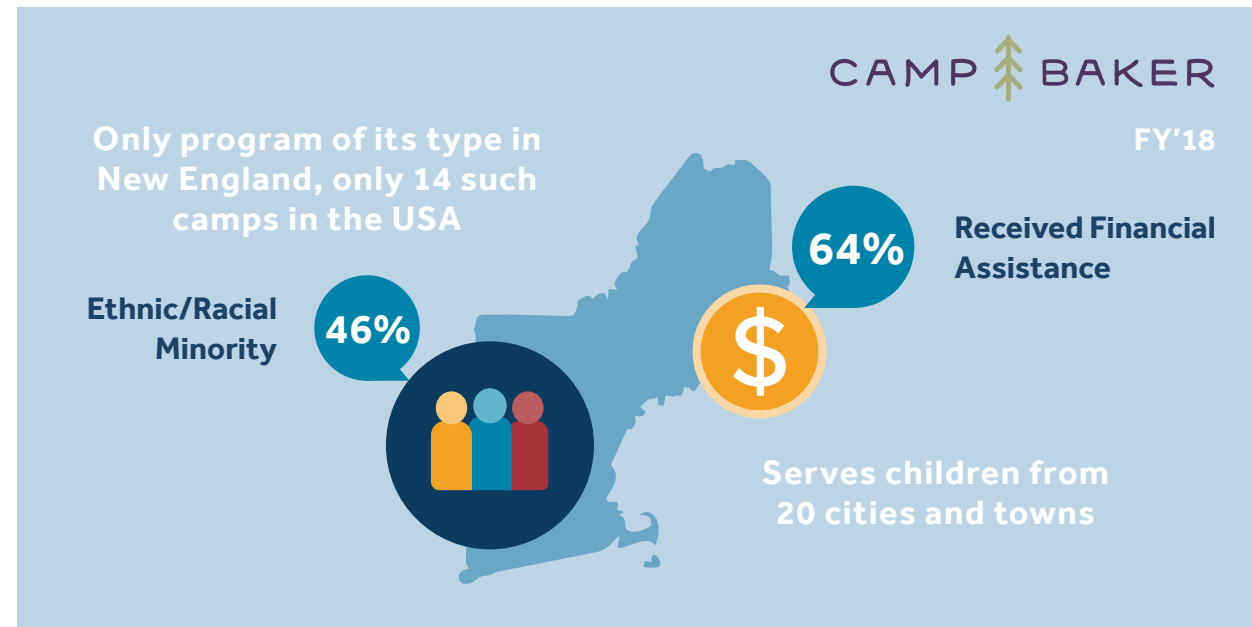
Brad Jolie, FY'18
 Robert Jones, FY'17
 Barbara Chasen Joskow and Paul Joskow, FY'18
 Jesse Jost, FY'18
 Christina Jung, FY'18
 James Kackley, FY'18
 Jennifer Kagnoff, FY'17
 Adam P. Kahn and Kimberly C. Smith, FY'17
 Monique Kahn, FY'17
 Bernard and Faith Kaplan, FY'17, FY'18
 Lawrence and Margie Kaplan, FY'17, FY'18
 Martin S. Kaplan and Wendy Tarlow Kaplan, FY'18
 Anastasia Karasoulos-Vekiarides, FY'17

Frank Kavanagh, FY'18
 Stephen B. Kay and Lisbeth Tarlow, FY'17
 Alan and Diana Kaye, FY'17, FY'18
 James Kearns*, FY'17
 John Kelley, FY'18
 Kevin and Nicole Kelly, FY'18
 Michael Kelly, FY'17
 Helene Kennedy, FY'18
 The Honorable Patrick J. Kennedy and Amy Kennedy, FY'18
 Robert and Reisha Kenninson, FY'17
 Andrea Keohane, FY'18
 Bethany and Joseph Keohane, FY'18
 Bob and Erica Keohane, FY'18
 Joe and Marilyn Keohane, FY'18
 Susan and Brad Keyes, FY'17, FY'18

Meryl and Robert Lindenberg, FY'17
 Louise Lintz, FY'18
 Jesse and Lynne Lipcon, FY'17, FY'18
 David Litman, FY'18
 Ira Litman, FY'18
 Richard and Barbara Litt, FY'18
 Jack LiVolsi, FY'18
 Jennifer Locke, FY'18
 Elizabeth Loder, M.D. and John M. Loder, FY'18
 Debra Loevy-Reyes, FY'17
 Gisela LoPiano, FY'18
 Candace Lowe, FY'17
 Fiona and Geoffrey Lubbock, FY'18
 Nancy and Richard Lubin, FY'17
 Donna and Richard Lupatkin, FY'17
 Roger and Kathleen Luring, FY'17
 David and Wendy Lustbader, FY'18
 Joshua and Jessica Lutzker, FY'18
 John Lynch, FY'17
 M. MacClary and Family, FY'18
 Penny MacConnell, FY'17
 John D. MacEachern, Jr., FY'18
 Ann D. Macomber, FY'18
 Thomas and Margaret Maehl, FY'18
 Anthony Maffeo, FY'17
 Joseph Magner, FY'18
 John Maguire, FY'17
 Sherri Mahne, FY'17, FY'18
 Mr. and Mrs. Joseph E. Mahoney, FY'18
 Mina Makariou, FY'18
 Debra J. Malone, FY'17
 Debbie Maltzman, FY'17
 Jane Manopoli, FY'18
 Harry Margolis, FY'17
 Katherine Marrese, FY'18
 David and Randi Martens, FY'17, FY'18
 Maureen Martens, FY'17
 Demond and Kia Martin, FY'17, FY'18
 Jane Blumenthal Martin, FY'18
 Birgit Martinelle, FY'17
 Stephanie and Vincent Massey, FY'18
 Ralph and Mary Ann Mastroianni, FY'18
 Charles Mathews, FY'17
 Jane B. and Robert J. Mayer, M.D., FY'17
 Mary Ann McCabe, Ph.D., FY'17
 Kevin M. McCafferty, FY'17
 Christine McCarrick, FY'18
 Daniel McCarthy, FY'17, FY'18
 Maureen McCausland, FY'17
 Siobhan McClure, FY'18
 The McClure Family, FY'17
 Janet McCormick, FY'18
 Beverly McDonald, FY'18
 Therese McElrath, FY'18
 Maureen McElroy, FY'17, FY'18
 William E. McIntosh, III, FY'17

Joseph McKane, FY'17
 Bill and Alice McKeever, FY'17, FY'18
 Catherine and Robert McMenimon, FY'17
 Bryce and Kayla McOsker, FY'18
 Michael McQuillan, FY'17
 Matthew McTygue, FY'18
 Raymond McVeigh, FY'18
 Kim Meader, FY'17
 Muriel Medard, FY'18
 Michael Meidinger, FY'18
 Anne Mele, FY'18
 Alexandra Mele-Algus, FY'18
 Ariel Mele-Algus, FY'17
 Jennifer Mendonca, FY'18
 John and Jo Frances Meyer, FY'18
 Alyson and Scott Miller, FY'17
 Krisann and Jim Miller, FY'18
 Mark Miller, FY'18
 Morris Miller, FY'18
 Joan Minklei, FY'18
 Paul Mitchell, FY'18
 Joe Modica, FY'18
 Arlene Modry, FY'18
 Jonathan and Deborah Moll, FY'17, FY'18
 Sean K. Monahan, FY'18
 Karen Montague, FY'18
 Sheryl Monteiro, FY'17
 Kelly Moore, FY'18
 Tracey Morgan, FY'18
 Robert and Elizabeth Morrill, FY'18
 Alison Morrison, FY'18
 Scott Moses, FY'18
 Gregory Mucha, FY'17
 Brian and Cricket Mullaney, FY'17
 Joseph Mullaney, FY'17
 Michael Mullaney, FY'18
 Stacy Mullaney, FY'17, FY'18
 Edward and Susanne Mullen, FY'18
 Jennifer Mullen, FY'18
 Sean Mulvehill, FY'18
 Donald M. Murano, FY'18
 Colleen Murphy, FY'17
 Elisabeth Cronin Murphy, FY'17, FY'18
 Kathleen and Philip Murphy, FY'18
 Martin Murphy, FY'17
 Philip Myers, FY'17, FY'18
 Sandra and Ralph Myrow, FY'18
 John and Karen Narkiewicz, FY'18
 Megan Neal, FY'18
 Peter and Patricia Negrini, FY'18
 Carl and Christine Nelson, FY'17, FY'18
 Robert Nentwig, FY'18
 William Tripp Neville, FY'18
 Drs. Carolyn and Eli Newberger, FY'17
 Jane Newman, FY'18
 Todd Nichol, FY'17, FY'18

The Right Reverend Douglas R. Nowicki, FY'18
 Mary O'Connor, FY'17
 Anne O'Donnell, FY'18
 Robert and Leslie Ogan, FY'17
 Paul O'Keefe, FY'17
 Debra Olshever, FY'17
 Janet O'Neill, FY'18
 Tim and Peg O'Neill, FY'18
 Anthony Onello, FY'17
 Walter St. Onge, FY'18
 George and Melissa Orlov, FY'18
 Beverley Orr, FY'18
 John Osbahr, FY'17
 Mary O'Toole-Gormon, FY'18
 William H. Overholt, FY'18
 Karen and Mitchell Padnos, FY'18
 Robert Pagano, FY'17
 Francis and Frederica Paine, FY'17, FY'18
 Timothy J. Palmatier, FY'17, FY'18
 Marc Parent, FY'18
 Veronique Parent, FY'18
 Constance Parish, FY'17
 Karen and David Parker, FY'17
 Susan Parsley, FY'18
 Dr. Joseph O. and Marilyn A. Pastore, FY'18
 John Pears and Thekla Diehl, FY'17, FY'18
 Michele Pericci, FY'17, FY'18
 Nicole Perkins, FY'17
 Steven R. Perles, FY'18
 Christopher Perry, FY'17
 Judith and Kenneth Peskin, FY'17, FY'18
 Chris and Kathleen Peter, FY'17, FY'18
 Mary Peter, FY'17, FY'18
 Nancy Peter, FY'18
 Tom and Sue Peter, FY'17, FY'18
 Verna and Thonus Peter, FY'17, FY'18
 William Peter, FY'18
 Jim Peters, FY'17, FY'18
 Ellen Petersen, FY'17
 Darlene Petke, FY'18
 Christopher and Julie Petrini, FY'18
 Kevin and Yen-Yen Petrosino, FY'17, FY'18
 Christopher Phillips and Kimberly M. Diggs, FY'18
 Donald and Gloria Pike, FY'18
 Sarah Pinard, FY'18
 K. Julie Pinel, FY'18
 Mark Pitluck, FY'17, FY'18
 Justine and Doug Plaisted, FY'17
 Charles Platt, FY'17
 Janet Plotkin, FY'18
 Nancy Pohlman, FY'17
 Linda and Rich Polas, FY'18
 Lawrence Polimeno, FY'17
 Jim and Colleen Polk, FY'17



Ernest Khirallah, FY'18
 Joseph Khirallah, FY'18
 Larry Khirallah, FY'18
 Ralph Khirallah, FY'18
 Ray Khirallah, FY'18
 Tom Killecullen, FY'17, FY'18
 Caren and Daniel Kimball, FY'18
 Randy Kinard, FY'17, FY'18
 Robert T. Kinscherff, Ph.D., J.D., FY'18
 William and Carol Kirchick, FY'18
 Linda Kline, FY'17
 Drew Knowland and Marijane Tuohy, FY'17, FY'18
 William Korman, FY'18
 Dr. Douglas J. and Janice M. Koza, FY'17, FY'18

Sandy Krakoff, FY'18
 Peter W. Kronberg, FY'18
 Jeffrey Kruck, FY'18
 Edward and Barbara Krupat, FY'17
 Betty J. Kuhn, FY'17
 Peter and Sarah Kuper, FY'18
 Eileen Laband, FY'18
 William Labbe, FY'17
 Daniel LaFave, FY'17
 Glenn and Elizabeth LaFave, FY'17, FY'18
 Marisa Lago, FY'17
 Bill Lahey, FY'18
 Mary and Henry Lally, FY'18
 Myra Landau, FY'18
 David and Kathleen Lang, FY'17, FY'18
 Robert A. Lawrence, FY'18

Gareth Lawson, FY'18
 Jay and Julie Layden, FY'18
 Lauren C. Leahy, FY'18
 David and Nancy Leblang, FY'17
 Robert and Beverly Ledoux, FY'17
 Dix Leeson, FY'17, FY'18
 William F. Leisman, FY'18
 Jonathan and Jennifer Lenicheck, FY'17, FY'18
 Andrew and Sharen Leonard, FY'18
 Judy and Michael Leopold, FY'18
 Sherit Levin, FY'18
 Marsha Levine, FY'18
 John Levy and Gail Rothenberg, FY'18
 Scott Lewis, FY'18
 Rubi Lichauco, FY'18



FOUNDATION DONORS

Anonymous, FY'18
 Blue Cross Blue Shield of Massachusetts Foundation, FY'17, FY'18
 Brown Advisory, FY'18
 Paul and Elaine Chervinsky Charitable Foundation, FY'17, FY'18
 Robert Lloyd Corkin Charitable Foundation, FY'18
 G. Gorham Peters Trust, FY'17, FY'18
 Hurdle Hill Foundation, FY'17, FY'18
 IAM Strong Foundation, FY'17
 Josiah Macy, Jr. Foundation, FY'18
 Plymouth Rock Foundation, FY'18
 Red Sox Foundation, FY'18
 Rodman Ride for Kids, FY'17, FY'18
 Tagerman Philanthropic Fund, FY'17, FY'18
 The Kenneth D. Bane Foundation, Inc., FY'17
 The Bennett Family Foundation, FY'17
 The Boston Foundation, FY'18
 The Ronald G. Casty Family Foundation, FY'18

The Clayton F. and Ruth L. Hawkrige Foundation, FY'17, FY'18
 The Leonard & Hilda Kaplan Charitable Foundation, FY'17, FY'18
 The Klarman Family Foundation, FY'17, FY'18
 The Lost & Foundation, Inc., FY'18
 The Demond and Kia Martin Foundation, FY'18
 The John D. and Catherine T. MacArthur Foundation, FY'17, FY'18
 The Oliver W. Mink Estate, FY'17, FY'18
 The Martin Salomon Morton and Gustel Schreiber Morton Foundation, FY'17, FY'18
 The New England Patriots Foundation, FY'18
 The Pfizer Foundation, FY'17
 The Racemaker Charitable Fund, FY'18
 The Verano Fund, FY'17, FY'18
 Topol Family Foundation, FY'18
 Peter and Elizabeth Tower Foundation, FY'17, FY'18
 United Way of Rhode Island, FY'17, FY'18
 ValMark Securities Global Gift Fund, FY'17, FY'18

Next Step



SUMMER 2016 (FY'17)

- 72% currently enrolled in college or trade school
- Participants from MA, NY, ME, NH, PA, & LA
- 50% received financial assistance

SUMMER 2017 (FY'18)

- 74% currently enrolled in college or trade school
- Participants from MA, PA, NH, & CT
- 35% received financial assistance

Jay Pollard, FY'18
 Douglas H. Powell, Ed.D., ABPP, FY'18
 Andrea Powning, FY'17
 Jean B. Pratt, FY'17, FY'18
 Suzanne Priebatsch, FY'18
 James and Doris Prince, FY'17, FY'18
 Jared Prince, FY'17
 John and Anne Prince, FY'17, FY'18
 Kevin and Linda Prince, FY'18
 Samantha Prince, FY'18
 Tara Prince, FY'17
 Robert and Barbara Pringle, FY'17, FY'18
 Ethan Proia, FY'17
 Robert and Merrill Puopolo, FY'18
 Jessica Purslow, FY'18
 Patrick and Anne Quinn, FY'18
 Melinda and James Rabb, FY'18
 Susan B. Rahm, FY'18
 Mike Raimo, FY'17, FY'18
 Laura Ramanis, FY'18
 Allen Reardon, FY'17, FY'18
 Debra Reardon, FY'18
 Angela Reddy, FY'18
 Linda Regan, FY'18
 William Reiss, FY'17
 Suzanne E. Reitz, FY'17, FY'18
 Rick Renwick, FY'18
 Karen and Ron Rettner, FY'18
 Kathleen Rezendes, FY'18
 Maureen Rezendes, FY'18
 Glenn Ricciardelli, P.C., FY'18
 Dr. E. Anne Riley, FY'17
 Paul Robbat, FY'17
 Liz and Fred Robbins, FY'18
 Peter Robbins, FY'17, FY'18
 Barbara and David Roberts, FY'18
 Nina Rodriguez, FY'18
 Thomas J. Rogers, III, FY'18

Patricia Romeo-Gilbert and Paul Gilbert, FY'17, FY'18
 Gary Ronkin, FY'17
 Alan D. Rose, Sr., FY'18
 David and Susan Rosen, FY'18
 Dr. Warren D. Rosen, FY'18
 Pam, Mark and Sophia Roskelley-Johnson, FY'18
 Meredith and Jeremy Roy, FY'18
 James A. Rullo, FY'18
 Michael and Deanna Russell, FY'18
 Karen Salerno, FY'18
 Elizabeth Saltonstall, FY'17
 Lee and Diane Saltzberg, FY'17
 Mr. and Mrs. James Samuels, FY'18
 Stephen and Eileen Samuels, FY'18
 Christin Sander, FY'18
 Keri Santos, FY'17
 Jacob and Ofra Sarid, FY'17
 Evelyn and Michael Saulich, FY'18
 Roger A. and Norma Saunders - The Lennox Hotel, FY'18
 Hanna Savransky-Epstein and Barry Epstein, FY'18
 Judith Saxe, FY'17
 John Saylor, FY'17
 Thomas M. Scanlon, FY'18
 Rosalind and Israel Scheffler, FY'17, FY'18
 Mike Schmitt, FY'17
 Henry Schniewind, FY'18
 Charles and Mary Ann Schultz, FY'18
 Gayle and Michael Schumacher, FY'18
 Jonathan and Grace Scott, FY'17
 Linda Scott, FY'17, FY'18
 Jason Searle, FY'17
 Ally Sebian, FY'18
 Richard and Clare Segall, FY'18

John and Daniele Serafini, FY'17, FY'18
 Nancy and Joseph Serafini, FY'18
 Jeremy and Lisa Sewall, FY'18
 Hank Shafran, FY'18
 Niraj Shah, FY'18
 Austin Shapard, FY'17
 Leigh Ann Shattuck, FY'18
 Daniel H. Sheingold, FY'18
 R. S. Sheridan and Anne Steer, FY'18
 Dennis and Gayle Sherman, FY'18
 Michael and Amy Sherr, FY'18
 Shirley Shi, FY'18
 Drs. Robert B. and Cynthia J. Shilkret, FY'17
 James R. Shulman, FY'18
 Myrna B. Shure, Ph.D., FY'18
 Gary Siegel, FY'18
 Robert Silberman and Nancy Netzer, FY'17, FY'18
 Elda and David Simpson, FY'17
 Patricia Sims, FY'17, FY'18
 Katie Skipper, FY'17, FY'18
 Dominic Slowey, FY'18
 David Slye, FY'18
 Barbara O'Neil Smith, FY'18
 Carol Smith, FY'17
 Gregory Smith, FY'17
 Kimberly Smith, FY'17, FY'18
 Carol and Irv Smokler, FY'18
 Robert Sooy, FY'18
 John Sousa, FY'18
 Linn Spalding, FY'17, FY'18
 William Speciale, FY'18
 Mark W. Spencer, FY'17
 Jeffrey and Rosemarie St. Croix, FY'17
 Matt and Gina St. Croix, FY'17
 Michael St. Croix, FY'17
 Lisa Stanton, FY'18

Ken Stark, FY'18
 Virginia Steel, FY'18
 Anne Steer, FY'18
 Luke Steigerwald, FY'17
 Maria Steinmann, FY'18
 Diane Stemmer, FY'17
 Dr. Barbara F. Stern, FY'18
 Claire and Jeffrey Stern, FY'17, FY'18
 Bill Stewart, FY'17
 Henry and Suzanne Stimpson, FY'17, FY'18
 Lance and Gail Stockwell, FY'17
 Cathleen and James Stone, FY'18
 Christian Stone, FY'17
 Kristine Strand, FY'18
 Michael and Molly Strauss, FY'17
 Anne Stubbs, FY'17
 John and Eileen Sullivan, FY'17
 Rebecca Sullivan, FY'17
 Shannon Sullivan, FY'17
 Rev. Judith Swahnberg and Carl H. Novotny, FY'18
 Karen Sylva, FY'18
 Michael Tabone, FY'17, FY'18
 Alicia Taft, FY'17
 Neil and Lauren Tagerman, FY'17, FY'18
 Albert Tahhan, FY'17
 Robert Talbot, FY'17
 Andrew Tarab, FY'17
 Steven Tardanico, FY'18
 Howard Tarlow, FY'17, FY'18
 Susan and Parviz Tayebati, FY'18
 James and Linda Thompson, FY'17
 Thaddeus and Lucia Thompson, FY'17, FY'18
 Jeffrey J. Tiberii, FY'17, FY'18

Marie Tiberii, FY'18
 Suzanne Tiberii, FY'18
 Christina Tierney, FY'18
 Charles and Maureen Tillet, FY'17
 Paul Tillotson, FY'17
 Dr. Claudio O. Toppelberg and Mrs. Sarah Romano, FY'17, FY'18
 Gabriela Toppelberg, FY'17
 Nathaniel Toppelberg, FY'17
 Jack Toulopoulos, FY'17, FY'18
 Darrick Tow, FY'17, FY'18
 Kevin Tow, FY'18
 Robert C. Tow, FY'17, FY'18
 Ross Trachtenberg, FY'17
 Nigel and Joanna Travis, FY'18
 Ross and Lynn Trimby, FY'17, FY'18
 Anne and Brian Trinique, FY'18
 Luke Tsokanis, FY'17
 Dana Tufts, FY'17
 Brian M. Tuohy, FY'18
 Peter Vacheron, FY'17
 Nancy van der Voorn, FY'17
 Jacquelyn van der Woude, FY'17, FY'18
 Liv and Collin van Dyke, FY'18
 W. David and Mairead van Heest, FY'17
 Charles Vasilades, FY'17, FY'18
 Carmen and Candy Ventola, FY'18
 Michael and Barbara Victor, FY'18
 Christopher Vilandre, FY'18
 Monica Virgil, FY'17, FY'18
 David P. Vlachich, FY'18
 Oliver F. Wadsworth, Jr., FY'17
 Kevin Walker, FY'17
 David Walker and Simone Scott-Walker, FY'17, FY'18

Judith A. Walsh, FY'17, FY'18
 Michael J. Walton, FY'18
 Leah Warren, FY'17
 Gary Warzynski, FY'18
 George and Sarah Wattendorf, FY'17, FY'18
 Jay and Linda Webber, FY'17, FY'18
 Dorothy and Stephen Weber, FY'17, FY'18
 Meredith Weber, FY'18
 Bill Weil, FY'17
 Frederic Wells, FY'17
 Robert Wenthold, FY'17
 Margaret White, FY'17
 Melissa White, FY'18
 Robert White, FY'17
 Peter and Jean Whitehead, FY'18
 Jamie and Greg Whitney, FY'18
 Clint Wilder, FY'18
 Jim Wilkinson, FY'17, FY'18
 Sierra Williamson Ney, FY'17
 John T. Wilmot, FY'17, FY'18
 George and Judy Wilson, FY'18
 Joseph Winn, FY'18
 Andrea Wood, FY'18
 Kevin P. Wulff, FY'17, FY'18
 Erin Wyllie, FY'17, FY'18
 Sam Wyllie-Cain, FY'17, FY'18
 Mark Yerkes, FY'17
 Paul Y. Yin, M.D., FY'17
 Marilyn Zacharis, FY'18
 Ellen and Peter Zane, FY'18
 Britta Zecher, FY'17, FY'18
 Meira Zedek, FY'17, FY'18
 Rose Zoltek-Jick, FY'18
 John and Valerie Zona, FY'18
 Marc Zwetchkenbaum, FY'18

**Deceased*

Please know that every effort was made to ensure the accuracy of this list. If you have discovered an error, please accept our sincerest apologies and do not hesitate to notify the Development Office at 617-278-4279. Thank you.



Judge Baker: A History of Excellence

Founded in 1917, Judge Baker Children's Center is a Harvard Medical School affiliate with proven leadership in children's mental health. We have a long history of excellence resulting from the integration of research, training, and direct service. Judge Baker is committed to enhancing the quality of mental health care for children and families through the dissemination, implementation, and provision of evidence-based practices.

- Judge Baker Children's Center has provided mental health services, training, and consultation to the greater Boston area for over a century.
- We have developed expertise in the most cutting-edge, effective evidence-based mental health treatments for children.
- Our Quality Care Initiative works to create lasting improvements in the quality of mental health care and other services for all children and families, by working collaboratively with families, service providers, schools, state agencies, academic institutions, and funding organizations to help ensure that all children and families have access to the highest quality care.
- We provide evidence-based direct services for anxiety, depression, trauma and/or behavior problems through our Center for Effective Child Therapy and for ADHD and related behaviors through Camp Baker, our summer camp based at Hale Reservation in Westwood.
- Our Manville School is a nationally recognized educational institution that provides best practices curriculum and instruction to children with developmental and mental health needs.
- The Next Step: College Success & Independent Living Program fosters skills for independent living in a college environment for students with social communication deficits.
- We have a significant research portfolio, funded by federal and state agencies and private foundations, focused on child mental health treatment and prevention strategies.
- We provide training and ongoing consultation in evidence-based mental health treatments.

Judge Baker Children's Center
53 Parker Hill Avenue, Boston, MA 02120

Phone: (617) 232-8390



HARVARD MEDICAL SCHOOL
AFFILIATE



jbcc.harvard.edu

